

# SAFETY POSTER INSTRUCTIONS FOR THE SAFE HANDLING OF YOUR CUTTING TOOL

# martor

## SECUNORM MIZAR

**Automatic blade retraction**  
for a high degree of safety

**Ergonomic handle**  
for greater efficiency

**3-in-1 activator**  
to lock, unlock, and change the blade

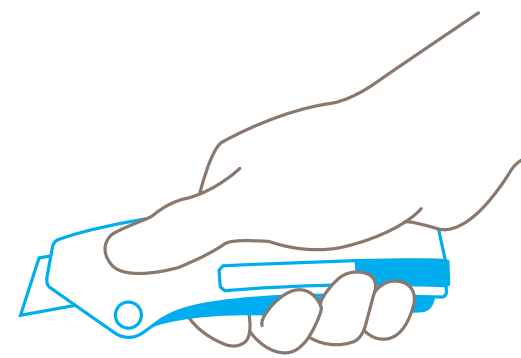


**2-times usable blade**  
with a large cutting depth

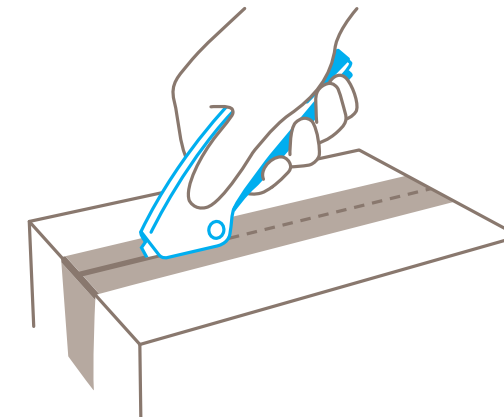
**Smooth, easy-to-squeeze lever**  
to engage the blade

**Please note:** to ensure your product always functions flawlessly, regularly remove any build-up of cutting material.

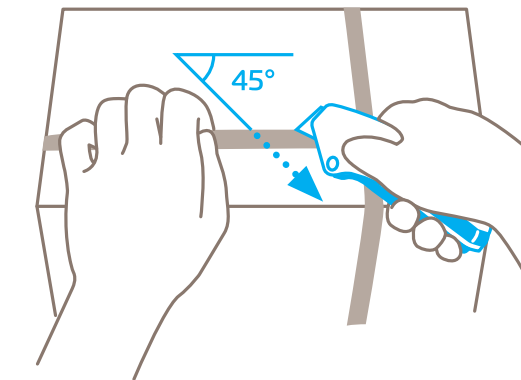
## USAGE



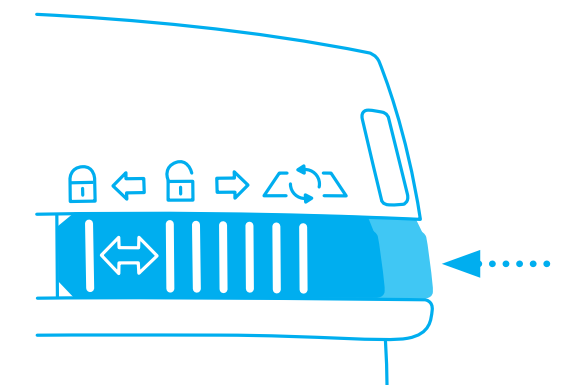
To **engage the blade**, unlock the cutter and squeeze the lever. Now you can cut.



Use the underside of the cutter head as a supporting surface to **work ergonomically** and efficiently.

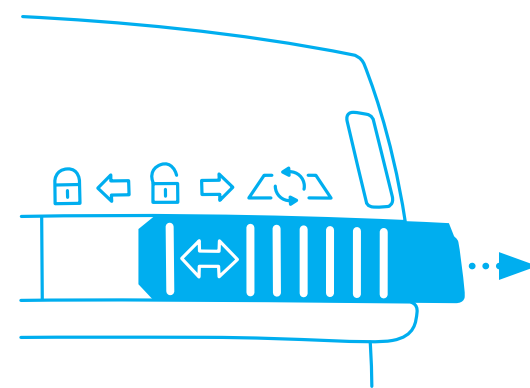


For best results, cut plastic strapping band **diagonally** (at a 45° angle).

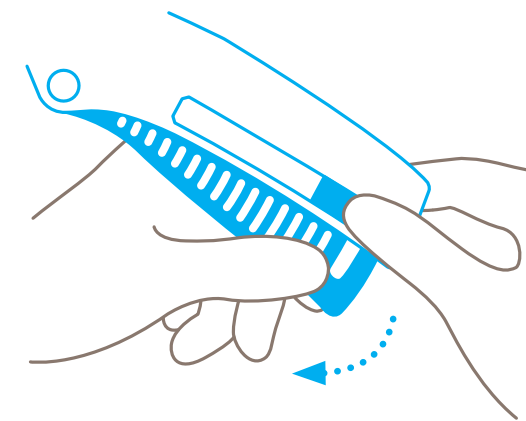


Use the 3-in-1 activator to **lock your cutting tool** after cutting.

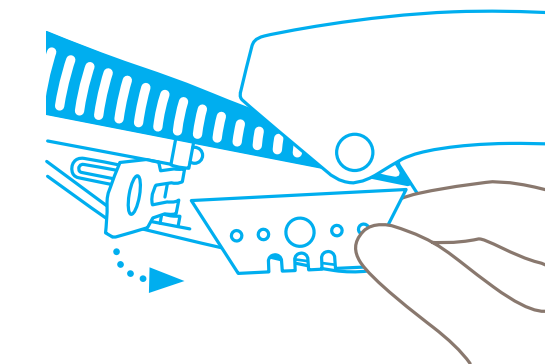
## BLADE CHANGE



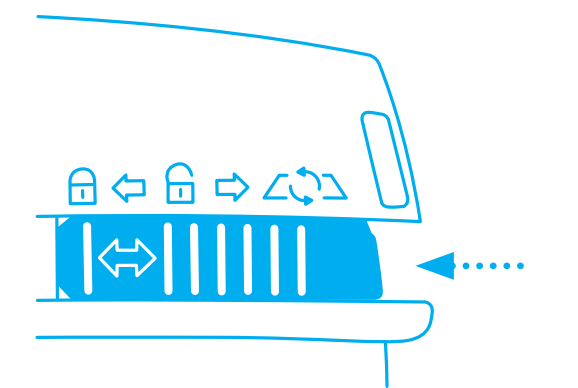
Move the 3-in-1 activator into its **rearmost position**.



Swing the lever completely **out of the handle**, and flip open the blade cover.

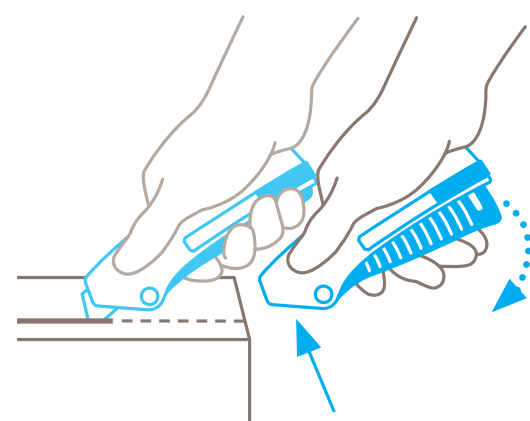


Now you can either **rotate or replace** the blade. Re-close the blade cover.



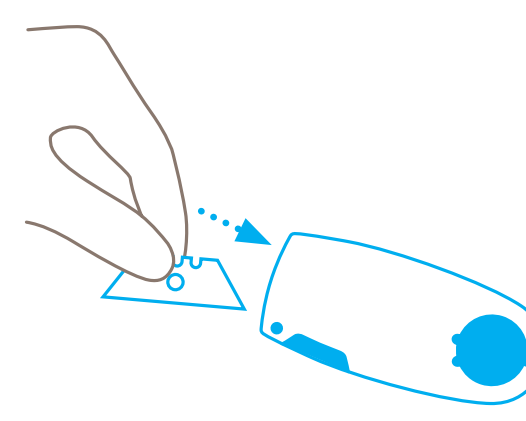
Swing the lever **back into the handle** and set the 3-in-1 activator to either lock or unlock.

## PROTECTION OF USER

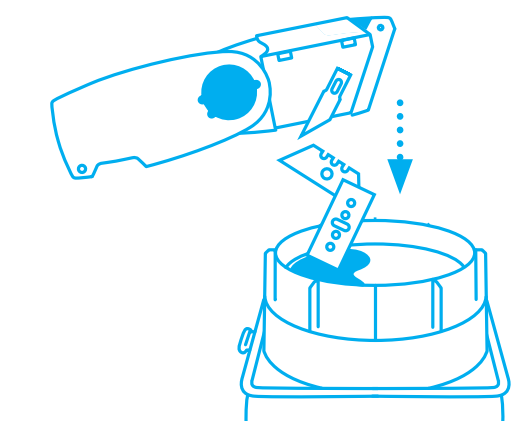


As soon as you **release the lever**, the blade disappears into the handle. And it stays there - until you engage it again.

## DISPOSAL



Your **SAFEBOX** is the best place to store **used blades**.



When the **SAFEBOX** is full, **empty all contents** into the **RECYCLING BOX**.