

SAFETY KNIFE SECUNORM PROFI25 MDP

ORDER NOW!

Order No.	120701.02
Knife size (L x W x H)	143 x 17 x 31 mm
Weight knife	84.5 g
Basic material	Aluminium
Variations	120700.02



METAL
DETECTABLE

18 mm cutting depth
for all common cutting
materials

Automatic blade retraction
for a high user protection

Metal detectable plastic
for optimal detection

Robust ergonomic handle
for the toughest challenges



Smooth-running slider
for right and left handers

2-cutting edge stainless steel blade
for a double period of use

**Abrasion resistant, uncoated
aluminium**
to protect against contamination
through paint slivers (flakes)

THE SAFER WAY TO CUT.

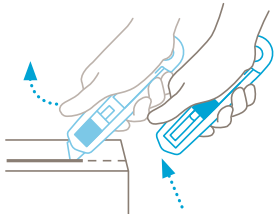
martor

MARTOR SAFETY KNIFE SECUNORM PROFIZ25 MDP

SAFETY TECHNOLOGY



SECUNORM
= high safety



Automatic blade retraction

The automatic blade retraction of the SECUNORM PROFIZ25 MDP guarantees a high degree of safety from cut injuries. As soon as you have started to cut, take your thumb off the slider. Then the blade will retract into the handle immediately after leaving the material being cut.

TECHNICAL FEATURES



Metal detectable



X-ray detectable



Tool-less blade change



Very abrasion resistant



Very ergonomic



2-cutting edge blade



Cutting depth



Rounded-tip trapezoid blade



For right and left handers



Stainless

EXAMPLES OF USE



MAIN CUTTING MATERIALS



Cardboard: up to 3-ply



Wrapping, stretch and shrink foil



Plastic strapping band



Tape



Bagged goods



Layers of foil or paper



Yarn, cord



PVC

MOUNTABLE BLADES



TRAPEZOID BLADE NO. 160099

NO. 160099.70

0.63 mm, rounded blade tips, deep-edged, stainless, 10 in safety dispenser



TRAPEZOID BLADE NO. 199

NO. 199.70

0.63 mm, deep-edged, stainless, 10 in dispenser

PACKING INFORMATION

Packaging unit	1 in single unit box (10 knives in multipack)
Size Single unit box	144 x 22 x 38 mm
Weight single unit box	99.3 g
EAN Code single unit box	4002632803741
Size outer pack	115 x 80 x 160 mm
Weight outer pack	1037.2 g
EAN Code outer pack	4002632853746